

**M3096EX/GX**  
**IMAGE SCANNER**  
**ILLUSTRATED PARTS CATALOGUE**

<b>REVISION RECORD</b>		
<b>Edition</b>	<b>Date published</b>	<b>Revised contents</b>
<b>01</b>	<b>November,1994</b>	First edition
<b>Specification NO.: C150-G002-01EN</b>		

The contents of this manual is subject to change without prior notice

All Rights Reserved Copyright © 1994 FUJITSU LIMITED

## HOW TO USE THIS MANUAL

### ILLUSTRATION

The illustration gives an exploded view of an assembly, and separate parts and how they fit together. Each part has a number corresponding to an Index No. on the parts list.

### PARTS LIST

#### (1) INDEX NO.

The number which corresponds with a part's number in the illustration.

- When the mark "\*" precedes the index number, the parts is a recommended spare parts.
- When a "-" is given, the part (screw or washer) is not shown in the illustration.
- When blank, and the QUANTITY and SPECIFICATION are given, a whole of that part is not shown in the illustration or that part is illustrated for detail breakdown in the other page.

#### (2) COMPOSITION & QUANTITY

These columns are shown the relationship between units, assemblies, subassemblies, and parts. A unit indicated in a column is assembled the parts indicated in the next right column. The figure is the quantity needed to assemble into on higher assembled unit.

#### (3) SPECIFICATIONS

Part number of the units, assemblies, subassemblies, or parts.

#### (4) DESCRIPTION

The part name, applicable device number, and other information are given in this column.

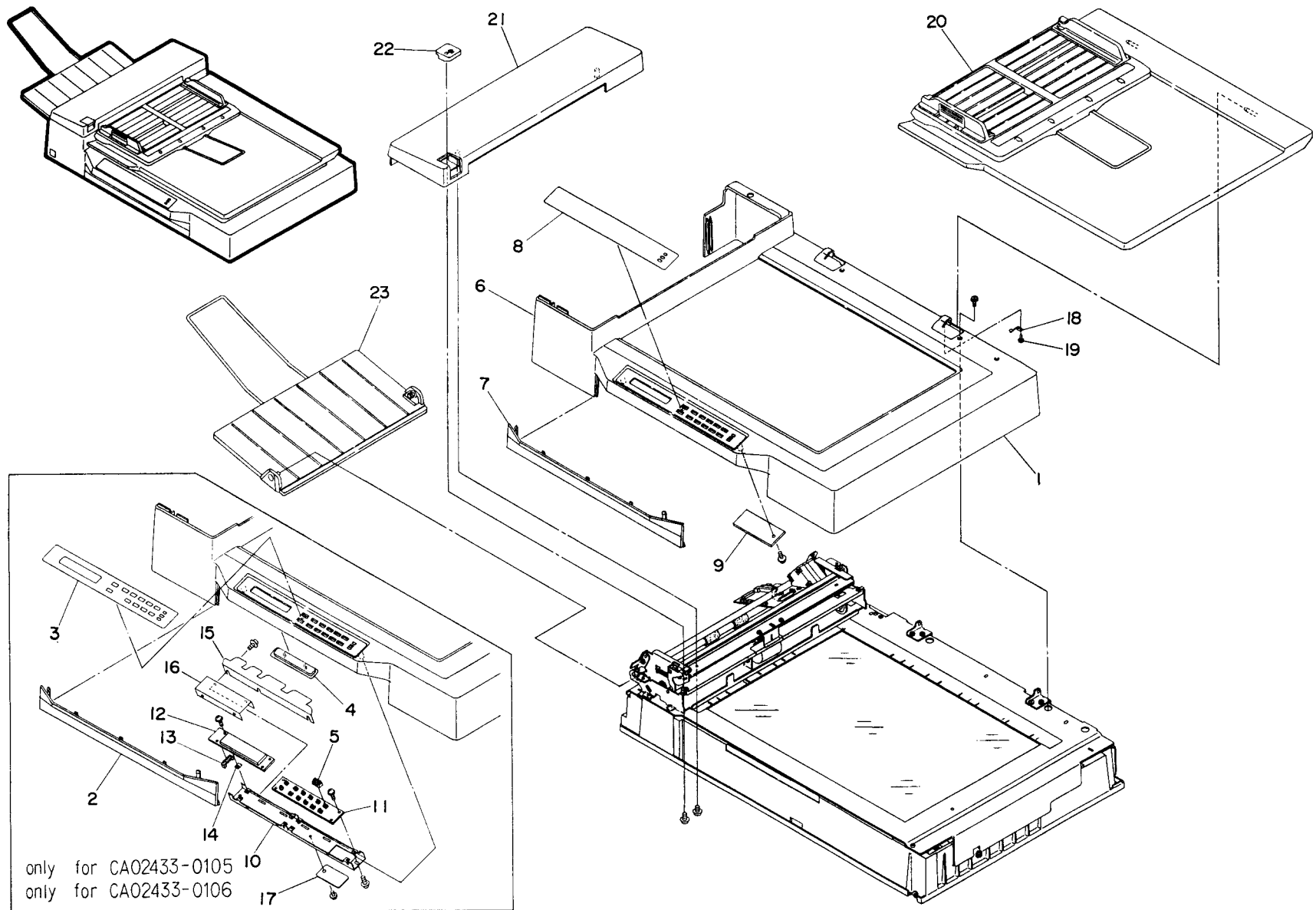
### OTHERS

The parts other than the parts marked with "\*" in INDEX NO. column are listed in SPARE PARTS LIST PEPAIR.

# CONTENTS

		Page
	M3096EX/GX	
FIGURE 1	FINAL ASSEMBLY-1 .....	1
FIGURE 2	FINAL ASSEMBLY-2 .....	3
FIGURE 3	PLATE and PCA ASSEMBLY.....	5
FIGURE 4	CARRIER UNIT.....	9
FIGURE 5	ADF ASSEMBLY .....	11
FIGURE 6	DOCUMENT COVER ASSEMBLY .....	15

FIGURE 1. FINAL ASSEMBLY-1



**FIGURE 1. FINAL ASSEMBLY-1**

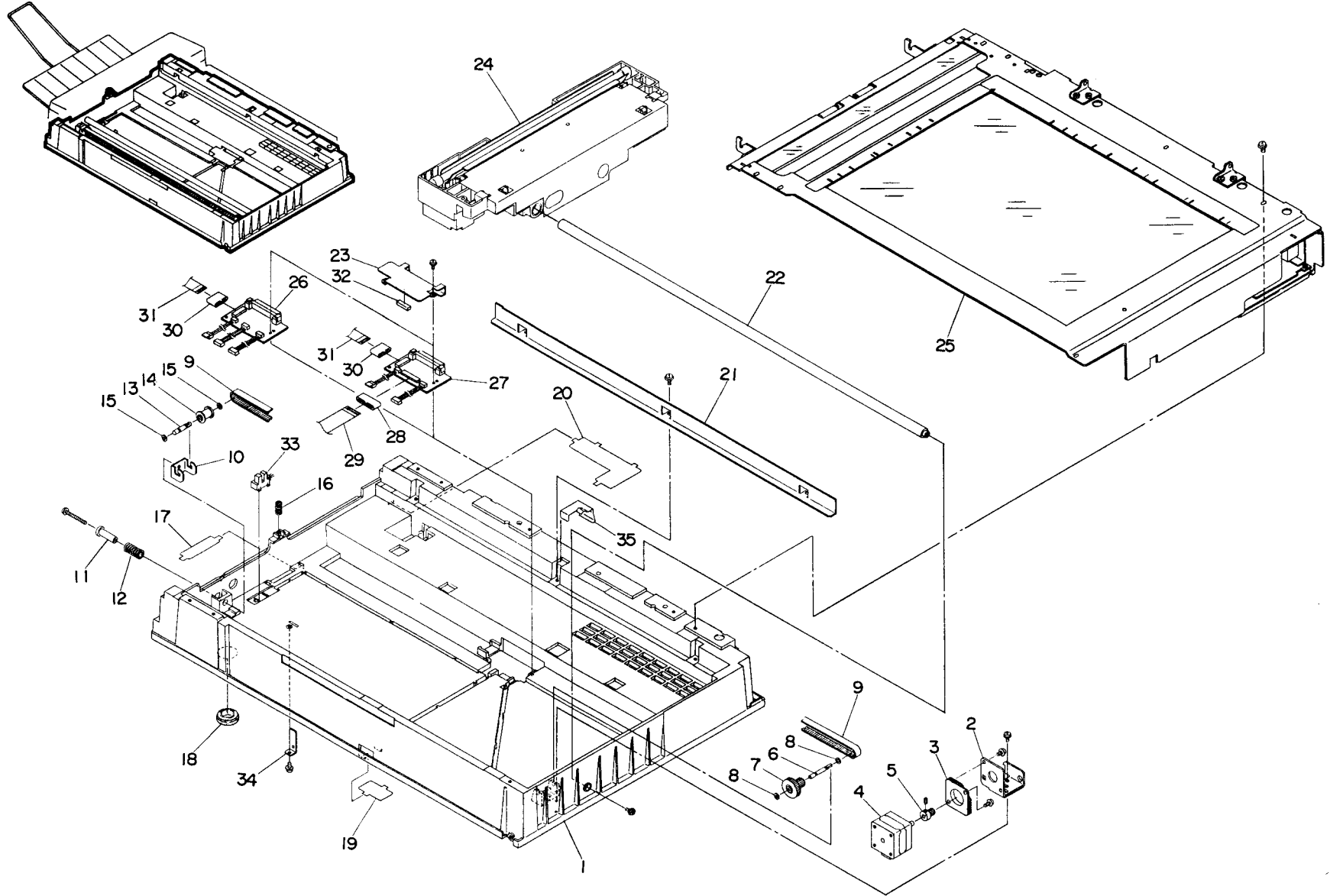
INDEX NO.	COMPOSITION & QUANTITY				SPECIFICATION	DESCRIPTION
	1				CA02433-0102	M3096EX Image Scanner (100V)
	1				CA02433-0103	M3096EX Image Scanner (200V)
	1				CA02433-0105	M3096EX Image Scanner (100V, with LCD)
	1				CA02433-0106	M3096EX Image Scanner (200V, with LCD)
	1				CA02433-0602	M3096GX Image Scanner (100V)
	1				CA02433-0603	M3096GX Image Scanner (200V)
	1				PA02201-E134	Upper cover ASY (for CA02433-0105) (for CA02433-0106)
1		1				
2		1				
3		1				
4		1				
5		12				
-		3				
	1				PA02201-E132	Upper cover ASY (for CA02433-0102) (for CA02433-0103) (for CA02433-0602) (for CA02433-0603)
6		1				
7		1				
8		1			PA02201-Z013	Sheet (V2) E
9		1			PA20203-B33X	PANEL PCA (for CA02433-0102/0103/0602/0603) (*1)
-		1				
-		1				
-		3				

**FIGURE 1. FINAL ASSEMBLY-1**

INDEX NO.	COMPOSITION & QUANTITY				SPECIFICATION	DESCRIPTION
*	1				PA02201-E160	Console unit
10		1				
-		4				
11		1				
12		1				
-		4				
13		1				
14		2				
15		1				
-		3				
16		1				
-		2				
17		1				
-		1				
-		3				
18		1			PA02201-Z023	Spring
19		1				
*20		1			PA02201-D122	Document cover ASY (FIG-6)
21		1			PA02201-Y873	ADF cover
-		2				
22		1			PA02201-Y878	Cap
-		1				
23		1			PA02201-Y877	Stacker (FIG-6)

\*1:This PCA is same specification as the PCA of 26 in fig 2.  
please separate the PCA for use.

FIGURE 2. FINAL ASSEMBLY-2



**FIGURE 2. FINAL ASSEMBLY-2**

INDEX NO.	COMPOSITION & QUANTITY				SPECIFICATION	DESCRIPTION
	1				CA02433-0102	M3096EX Image Scanner (100V)
	1				CA02433-0103	M3096EX Image Scanner (200V)
	1				CA02433-0105	M3096EX Image Scanner (100V, with LCD)
	1				CA02433-0106	M3096EX Image Scanner (200V, with LCD)
	1				CA02433-0602	M3096GX Image Scanner (100V)
	1				CA02433-0603	M3096GX Image Scanner (200V)
	1	1			PA02201-F100	Motor unit
1		1				
*		1				
2			1			
-			2			
3			1			
4			1			
5			1			
-			2			
-		2				
6		1				
7		1			PA02201-Y970	Pulley
8		2			U120-4300-Z817	Spacer
*9		1			U30L-5010-0019#599-9.5	CR Belt
10		1				
11		1				
-		1				
12		1				
13		1				
14		1			PA02201-Y971	ADJ Pulley
15		2			U120-4300-Z817	Spacer
16		1			PA02201-Y582	Spring
17		1			PA02201-Y691	Sheet B
18		4			PA82900-0182	Grommet

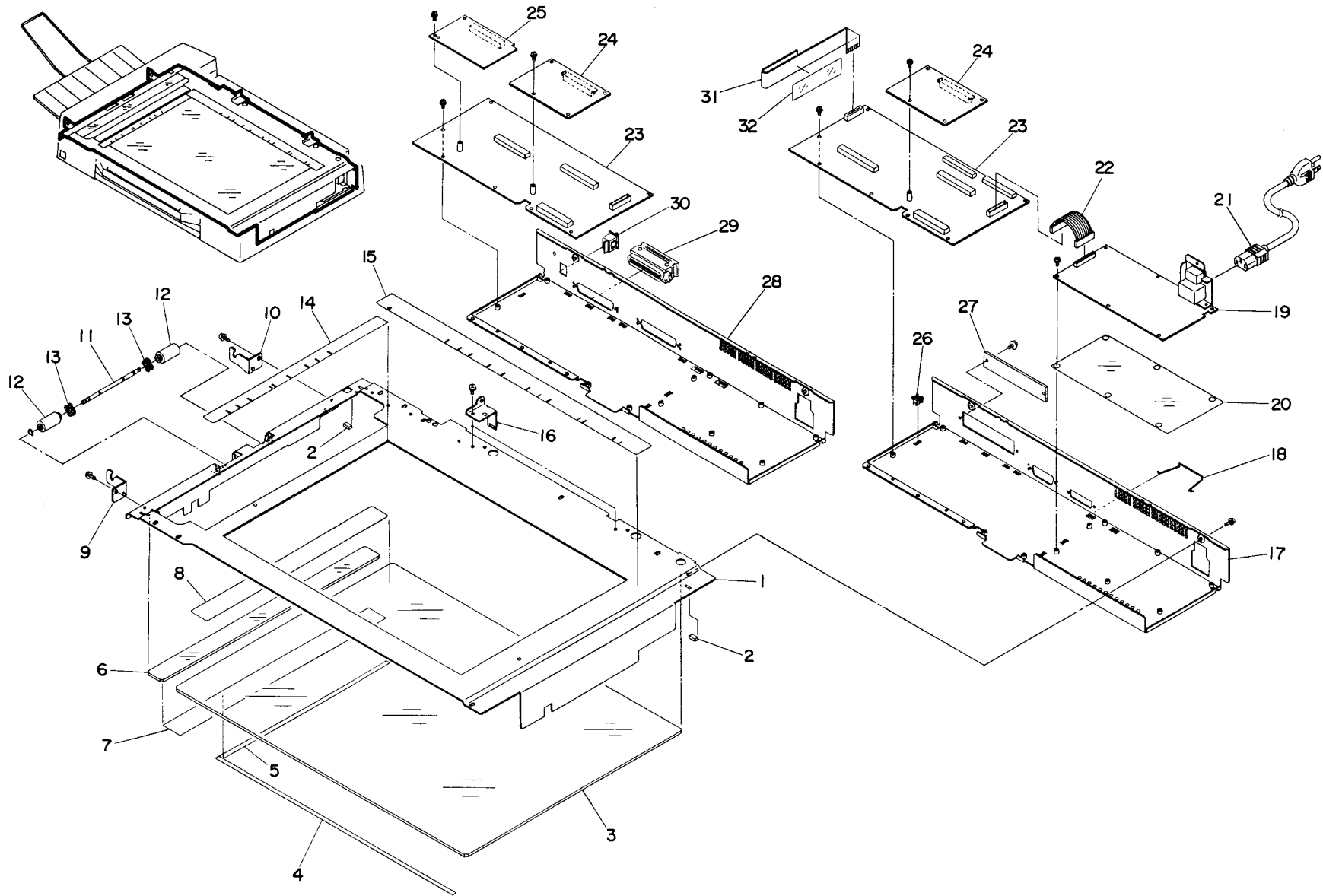
**FIGURE 2. FINAL ASSEMBLY-2**

INDEX NO.	COMPOSITION & QUANTITY				SPECIFICATION	DESCRIPTION
19		1			PA02201-Y692	Sheet C
20		1			PA02201-Y690	Sheet A
21		1			PA02201-Y890	CR Rail
-		3				
22		1				
-		1				
23		1				
-		1				
*24		1			PA02201-E101	Carrier unit (FIG-4)
25		1			PA02201-E102	Plate ASY (FIG-3)
-		2				
26		1			PA20203-B33X	Panel PCA (for CA02433-0102/0103/0602/0603) (*1)
27		1			PA20203-B57X	Panel PCA (for CA02433-0105/0106)
28		1				(for CA02433-0105/0106)
29		1			PA70001-0226	CSL2 Cable (for CA02433-0105/0106)
30		1				
31		1			PA70001-0309	CR2 Cable (for CA02433-0105/0106)
32						
33		1			PA47003-0018	Sensor
34		1			PA02201-Y500	Metal fitting
35		1			PA02201-Y989	FG Spring

\*1: This PCA is same specification as the PCA of 9 in fig 1. please separate the PCA for use.



**FIGURE 3. PLATE & PCA ASSEMBLY**



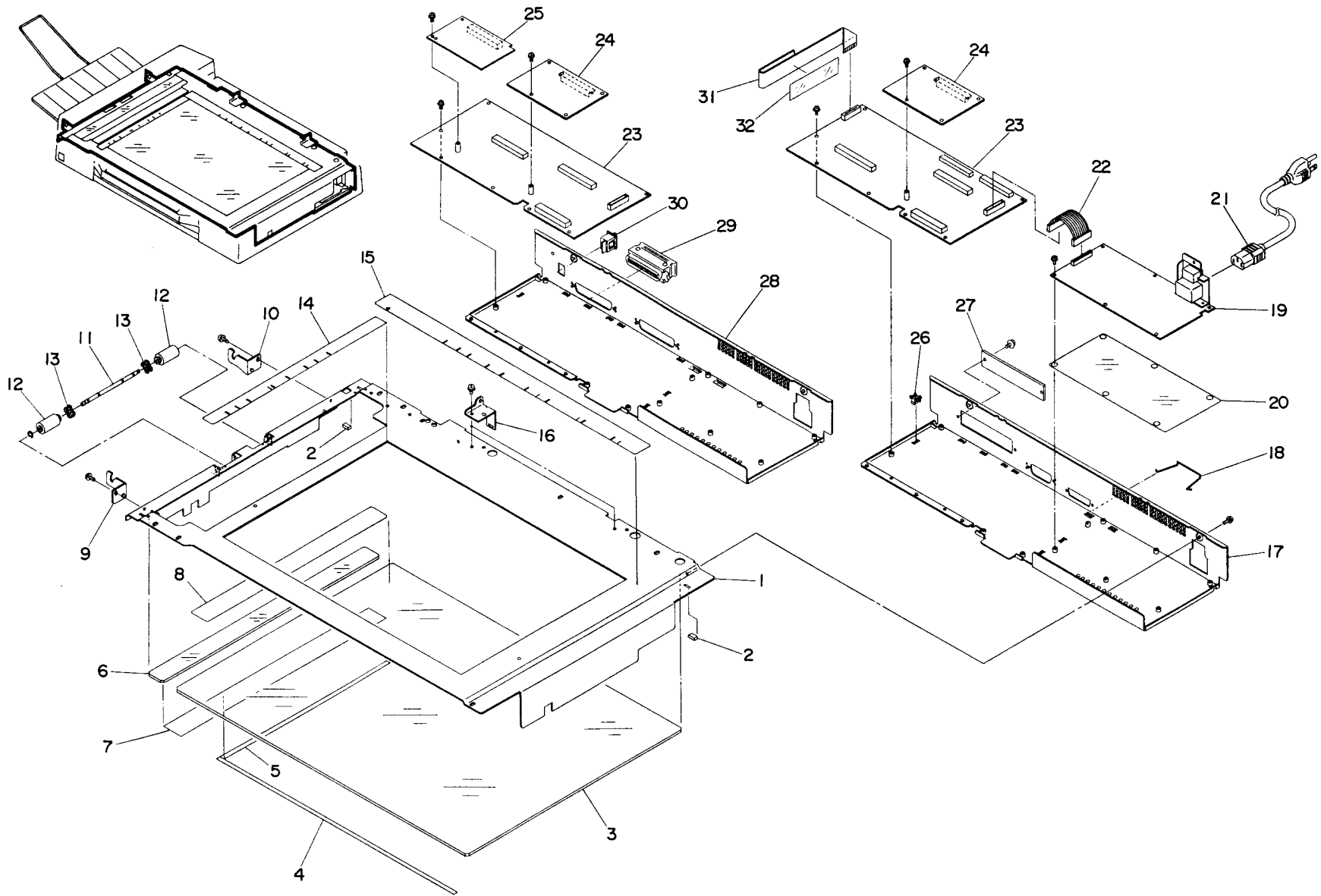
**FIGURE 3. PLATE & PCA ASSEMBLY**

INDEX NO.	COMPOSITION & QUANTITY				SPECIFICATION	DESCRIPTION
	1					
		1			PA02201-E102	Plate ASY
1			1			
2			2			
3			1			
4			1			
5			1			
6			1			
7			1			
8			1			
9			1		PA02201-Y693	Metal fitting
-			1			
10			1		PA02201-Y694	Metal fitting
-			1			
11			1			
-			1		RU6ER3-S	E ring
12			2		PA02201-Y583	Roller
13			2		PA02201-Y695	HK ring V2
14			1			
15			1			
16			2		PA02201-Y968	Metal fitting
-			2			
-		2				
17		1				(for CA02433-0102/0103/ 0105/0106)
-		2				
18		1				
*19		1			PA02701-0150	Power Supply
-		6				
20		1			PA02201-Y889	Sheet
21		1			PA63028-1800	AC cable (for CA02433- 0102/0602/0105)

**FIGURE 3. PLATE & PCA ASSEMBLY**

INDEX NO.	COMPOSITION & QUANTITY				SPECIFICATION	DESCRIPTION
21		1			C66L-4740-0003#L180R1	AC cable (for CA02433- 0103/0603/0106)
22		1			PA70001-0298	POW cable
*23		1			PA20202-B98X	Interface PCA (for CA02433-0102/0103)
*23		1			PA20204-B11X	Interface PCA (for CA02433-0105/0106)
*23		1			PA20203-B55X	Interface PCA (for CA02433-0602/0603)
-		5				
-		2				
24		1			CA01952-0191	IPC-2 (Option)
-		1				
*25		1			PA20203-B49X	Memory PCA (for CA02433- 0602/0603) (*2)
25		1			CA01952-0196	CMP-2 (Option) (*2)
26		6				
27		1			PA02201-Y463	Metal fitting (for CA02433-0102/0103) (for CA02433-0105/0106)
-		2				
28		1				(for CA02433-0602/0603)
*29		1			R40L-2100-0003	Terminator plug (for CA02433-0602/0603) (*1)

**FIGURE 3. PLATE & PCA ASSEMBLY**



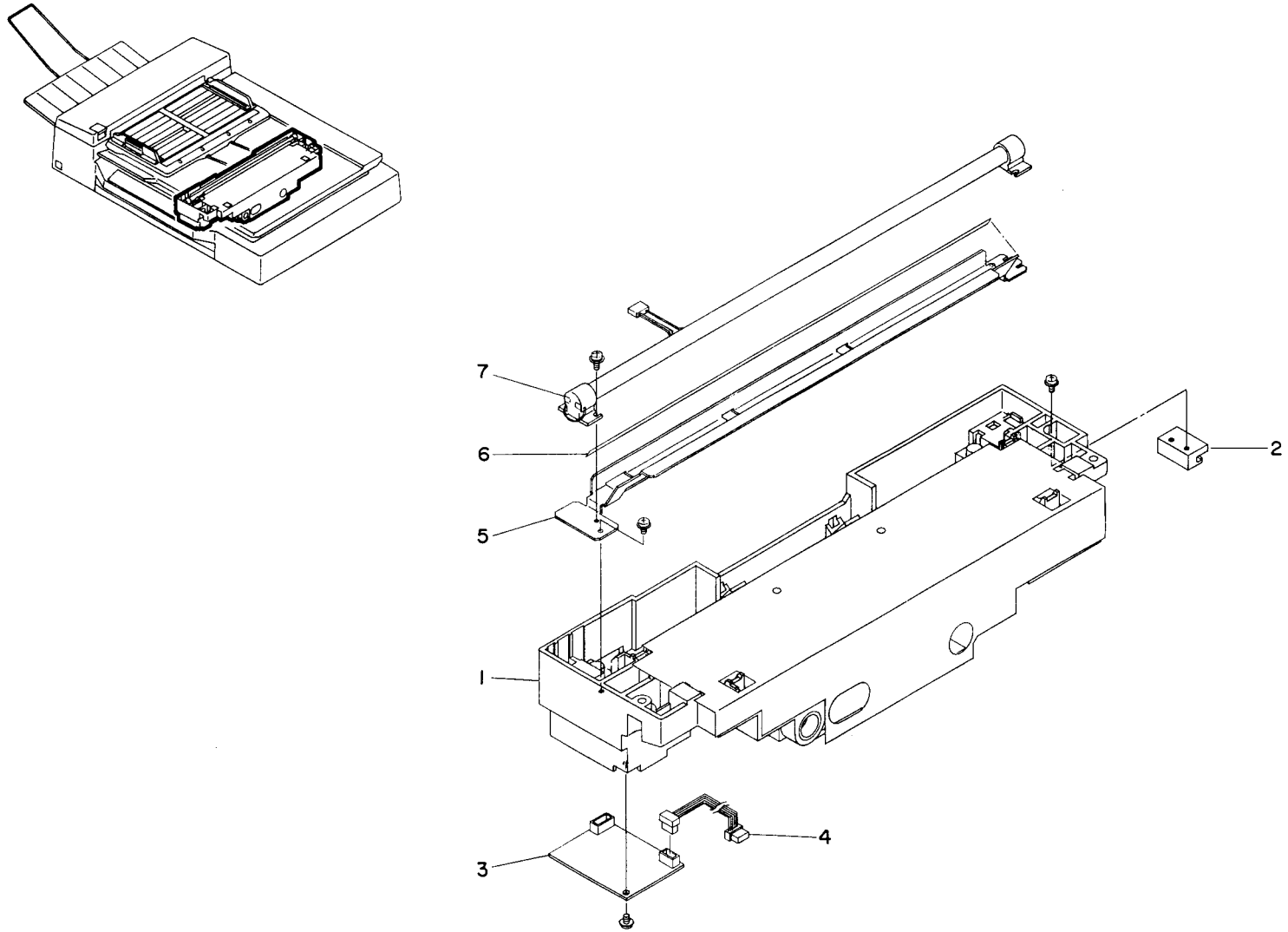
**FIGURE 3. PLATE & PCA ASSEMBLY**

INDEX NO.	COMPOSITION & QUANTITY					SPECIFICATION	DESCRIPTION
30	1					PA98201-0207	Switch (for CA02433-0602/ 0603)
31						PA02201-E012	ADF2 Cable unit
32						PA02201-Y966	ADF Sheet

\*1:For the case of active terminator specification is FCN-789P050-L/C-11

\*2:Memory PCA and CMP-2 can be mounted alternatively.

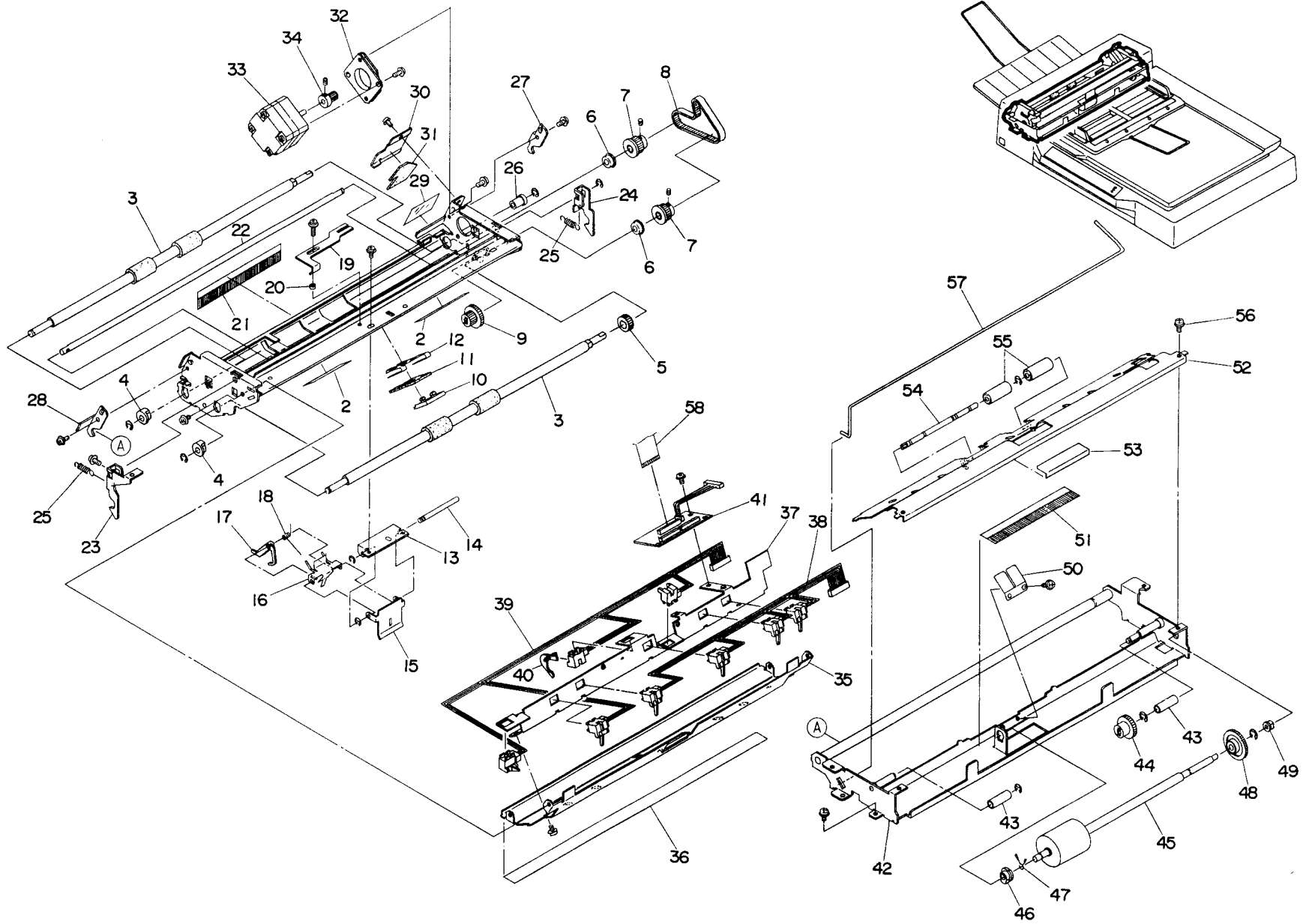
**FIGURE 4. CARRIER UNIT**



**FIGURE 4. CARRIER UNIT**

INDEX NO.	COMPOSITION & QUANTITY					SPECIFICATION	DESCRIPTION
*	1					PA02201-E101	Carrier unit
2	1					U110-8100-Z147	CR bushing
3	1					PA54001-0002	Lamp inverter
-	1						
4	1						
*	1					PA02201-F102	Lamp unit
5		1					
-		1					
6		1					
7		1					
-	2						

FIGURE 5. ADF ASSEMBLY



**FIGURE 5. ADF ASSEMBLY**

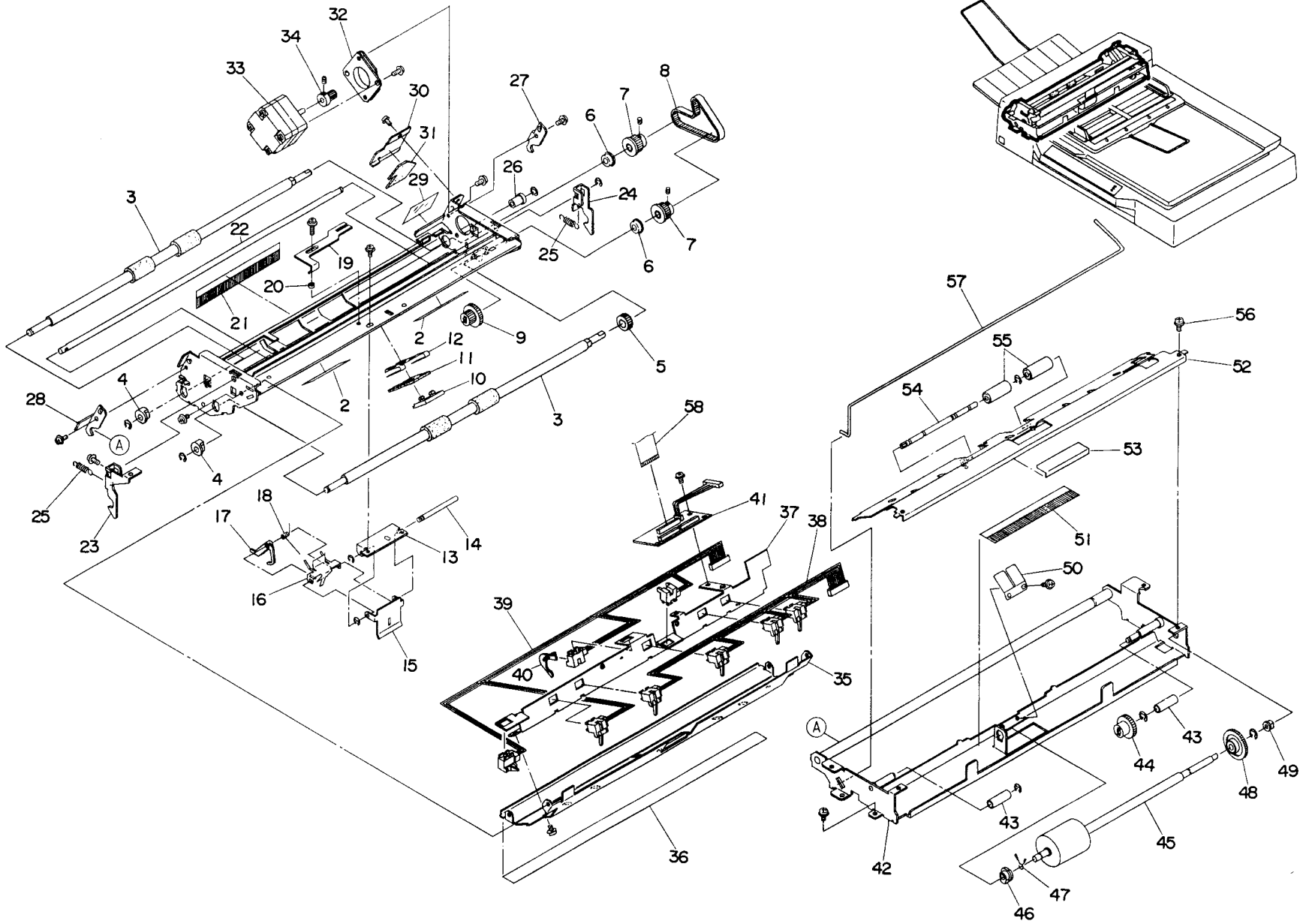
INDEX NO.	COMPOSITION & QUANTITY				SPECIFICATION	DESCRIPTION
*	1				PA02201-0007	ADF unit
1	1					
2	1				PA02201-Y982	Label
3	2				PA02201-Y526	Shaft
4	2				U120-4100-Z601	Bearing
-	2				RU6ER4-S	E ring
5	1				U110-8032-Z362	Gear
6	2					
7	2					
-	4					
*8	1				U30L-5010-0052#100-7.2	Belt
9	1					
	1					
10		1			PA02201-Y673	Pad holder
11		1			PA02201-Y536	Pad
12		1			PA02201-Y977	Spring
13	1					
-	2					
14	1					
-	2				RU6ER2-S	E ring
15	1					
16	1					
17	1				PA02201-Y532	EMP arm
18	1					
19	1					
20	1					
-	1					
21	1				U110-8100-Z449	Diselectric sheet
22	1					
23	1					
-	1					
24	1					
-	1				RU6ER4-S	E ring
25	2					
26	1					
27	1					
-	1					

**FIGURE 5. ADF ASSEMBLY**

INDEX NO.	COMPOSITION & QUANTITY				SPECIFICATION	DESCRIPTION
28	1					
-	1					
29	1					
	1					
30		1				
31		1				
*	1				PA02201-0022	ADF motor unit
32		1				
-		2				
33		1				
34		1				
-		2				
-	2					
35	1					
-	4					
36	1					
*	1				PA02201-0023	Sensor unit ASY
37		1				
38		1				
39		1				
40		1			PA02201-Y548	Arm
41	1				PA50950-0027	ADF board unit
42	1					
43	2					
-	2				RU6ER4-S	E ring
44	1					
*45	1				PA02201-Y978	Pick roller
46	1				U120-4100-Z601	Bearing
-	1				RU6ER4-S	E ring
47	1				U120-4320-Z592	Clip
48	1				U110-8032-Z171	Gear A
-	1				RU6ER4-S	E ring
49	1				U120-4310-Z215	Stopper
50	1					
-	2					
51	1				U110-8100-Z449	Diselectric sheet
*	1				PA02201-0021	Guide A ASY



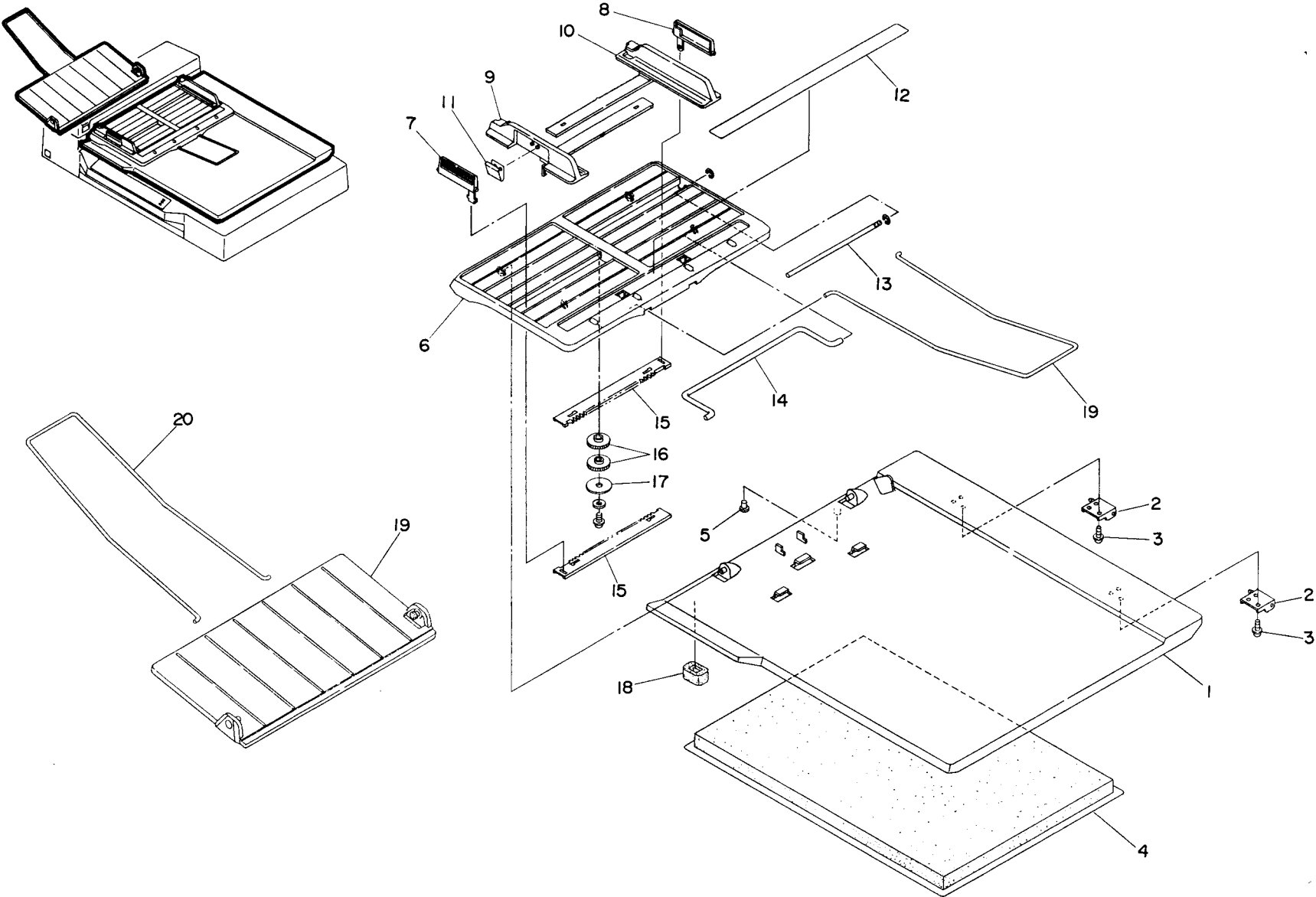
FIGURE 5. ADF ASSEMBLY



**FIGURE 5. ADF ASSEMBLY**

INDEX NO.	COMPOSITION & QUANTITY					SPECIFICATION	DESCRIPTION
52			1				
53			1			PA02201-Y705	Pick sheet
54			1				
55			1			U110-8100-Z437	Roller C
-			1			RU6ER3-S	E ring
56		2				PA82900-0320	Thumb screw
57		1					
-	4						
58	1					PA70001-0227	ADF2 Cable

**FIGURE 6. DOCUMENT COVER ASSEMBLY**



**FIGURE 6. DOCUMENT COVER ASSEMBLY**

INDEX NO.	COMPOSITION & QUANTITY				SPECIFICATION	DESCRIPTION
*	1	1			PA02201-D122	Document cover ASY
			1		PA02201-E120	Document cover ASY
1			1			
2			2			
3			4			
4			1			
5			1			
		1			PA02201-E122	Paper shute ASY
6			1			
7			1			
8			1			
9			1			
10			1			
11			1			
12			1			
13			1			
-			2		RU6ER3-S	E ring
14			1			
15			2			
16			2			
17			1			
18			1		PA02201-Y819	Rubber
-			1			
-			1			
19	1				PA02201-Y877	Stacker
20	2				U110-8100-Z556	Extension

FUJITSU